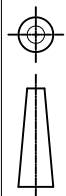
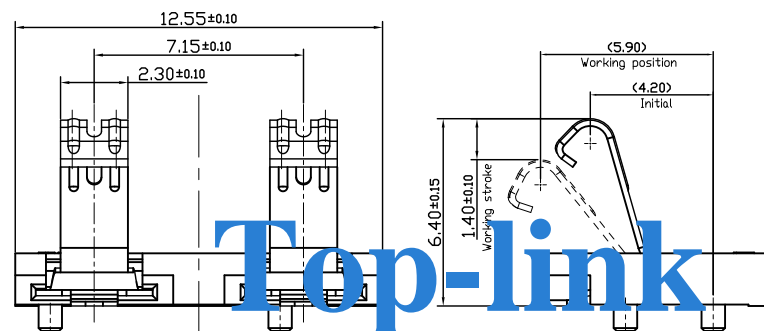
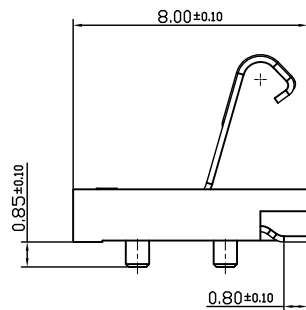
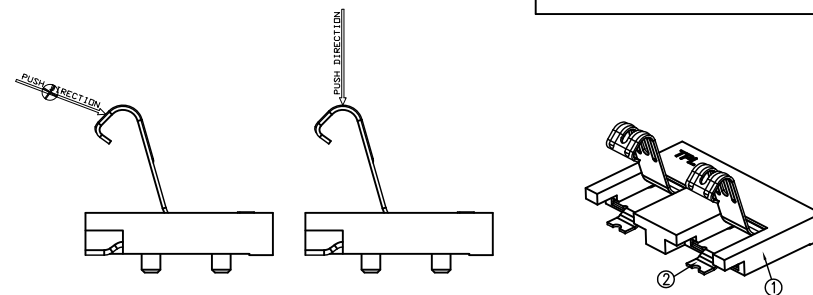
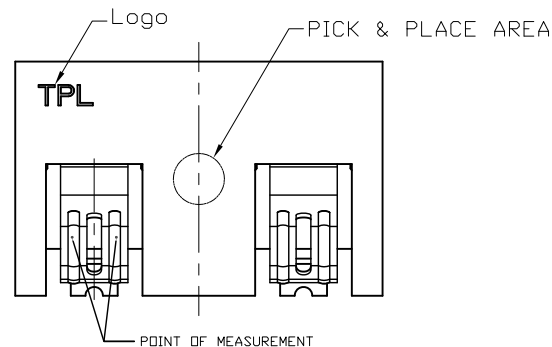


THIS INFORMATION IS CONFIDENTIAL AND IS DISCLOSED TO YOU ON CONDITION THAT NO FURTHER DISCLOSURE IS MADE BY YOU TO OTHER THAN TOP-LINK PERSONNEL WITHOUT WRITTEN AUTHORIZATION FROM TOP-LINK LTD.

DWG NO. C200050



USED ON —

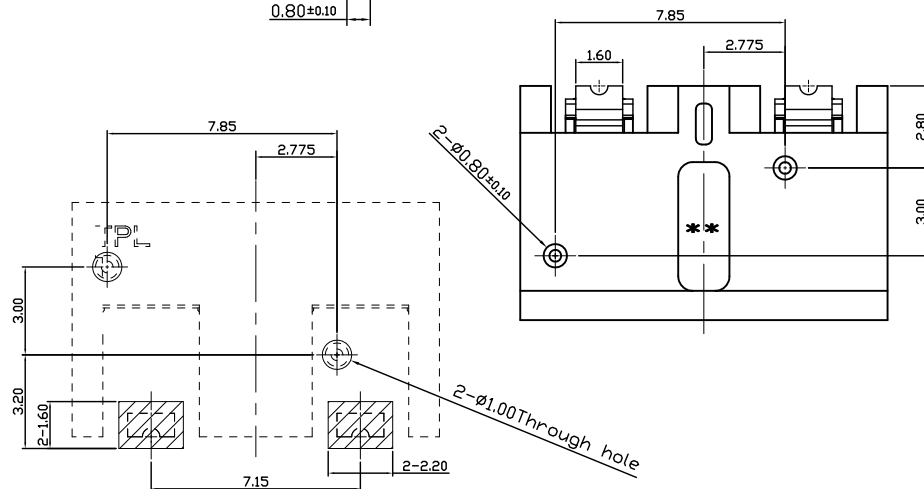


- NOTES:
- SPECIFICATION:
 - ELECTRICAL CHARACTERISTICS:
VOLTAGE RATING : 200V AC/DC
CURRENT RATING:3.0A
LOW LEVEL CONTACT RESISTANCE:50mΩ Max.

- MECHANICAL CHARACTERISTICS:
CONTACT NORMAL FORCE:250gf MIN PER PIN AT WORKING POSITION
DURABILITY : MATED 5,000 CYCLES AT WORKING STROKE WITHOUT DEGRADING

- ENVIRONMENTAL CHARACTERISTICS:
OPERATING TEMPERATURE RANGE : -20°C TO +70°C.

- TAPE & REEL PACKAGING PER EIA481 STANDARD.
- DIMENSION SHALL BE INTERPRETED PER ASME Y14.5M-2009.
- HARMFUL MATERIAL CONTROL FOLLOW "RoHS"



■ Solder pads
RECOMMEND PCB LAYOUT
TOLERANCE=±0.05

LDC
-
DIST
-

LTR	REVISION RECORD	APVD	DATE

ITEM	PART NAME	QTY	DESCRIPTION
3	CARRIER TAPE	12mm	TRANSPARENCY
2	CONTACT	2	COPPER ALLOY,Contact area:10u"Min,Au:1u"Min Over all.
1	HOUSING	1	HIGH TEMPERATURE THERMAL PLASTIC

PART NUMBER		200050-2	
DIMENSIONS IN MM TOLERANCES UNLESS OTHER SPECIFIED		MATL	
0 = ±-		DWN	
0.0 = ±0.15		APVD	
0.00 = ±0.10		CHK	
ANGLE:		REL	
0 = ±3°		NAME	
0.0 = ±2°		CUSTOMER DRAWING FOR 6. 4H 2PIN BATTERY	
REMOVE BURRS. BREAK SHARP EDGES R0.10 MAX DO NOT SCALE PRINT		SCALE	
		1:1	
		A4	
		DWG NO.	
		C200050	
		SHEET	
		1 OF 1	
		REV	
		A	

Top-Link
Electronics
Top-Link
Electronics Ltd.