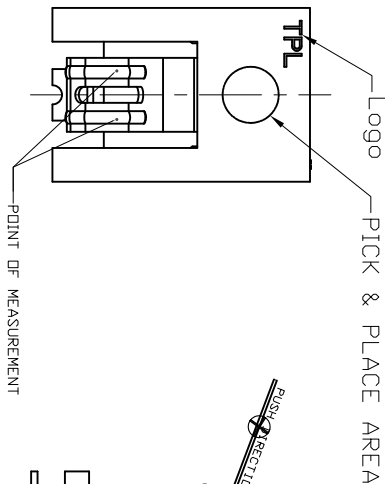
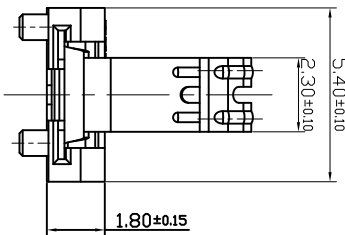
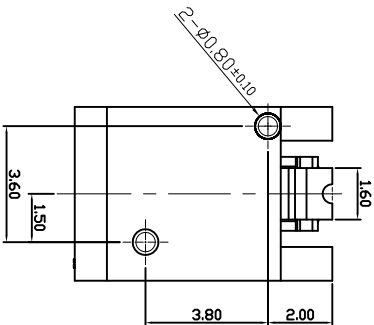
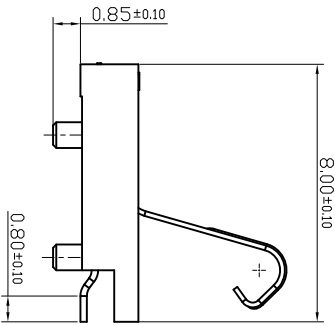
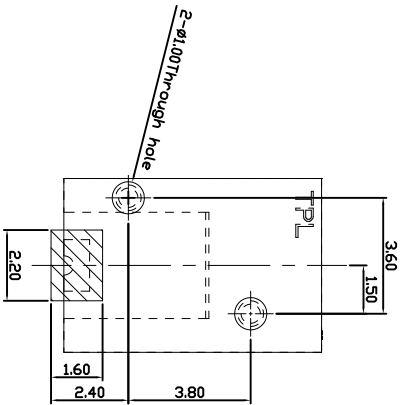
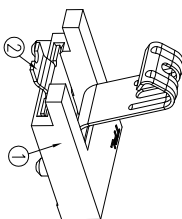
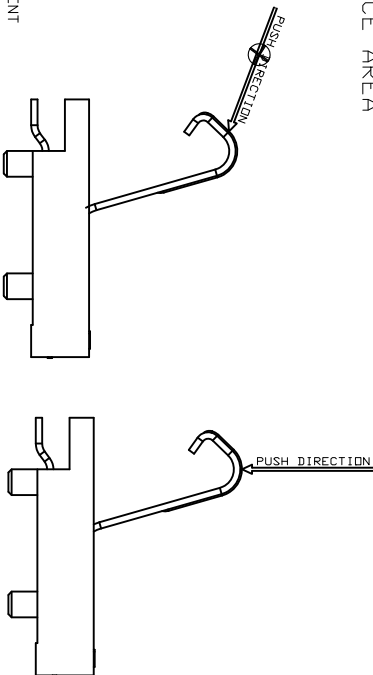
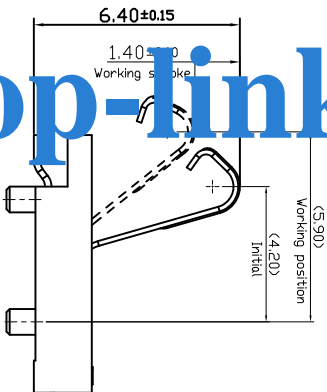


LDC  
-  
DIST  
-

4  
RECOMMEND PCB LAYOUT  
TOLERANCE=±0.05  
Solder pads



Top-link



USED ON

NOTES:

- SPECIFICATION:
  - ELECTRICAL CHARACTERISTICS:
    - VOLTAGE RATING : 200V AC/DC
    - CURRENT RATING:3.0A
    - LDW LEVEL CONTACT RESISTANCE:50mΩ Max.
  - MECHANICAL CHARACTERISTICS:
    - CONTACT NORMAL FORCE:250gf MIN PER PIN AT WORKING POSITION
    - DURABILITY : MATED 5,000 CYCLES AT WORKING STROKE WITHOUT DEGRADING
  - ENVIRONMENTAL CHARACTERISTICS:
    - OPERATING TEMPERATURE RANGE : -20°C TO +70°C.
    - TAPE & REEL PACKAGING PER EIA481 STANDARD.
  - DIMENSION SHALL BE INTERPRETED PER ASME Y14.5M-2009.
  - HARMFUL MATERIAL CONTROL FOLLOW "RoHS"

PART NUMBER 200039-1

TRANSPARENCY

COPPER ALLOY>Contact area:Au:10u"Min;Au:1u"Min Over oil.

HIGH TEMPERATURE THERMAL PLASTIC

DESCRIPTION

DIMENSIONS IN MM  
TOLERANCES UNLESS  
OTHER SPECIFIED

0 = ±  
0.0 = ±0.15  
0.00 = ±0.10

ANGLE: = ±3°  
0 = ±2°

REMOVE BURRS, BREAK  
SHARP EDGES R0.10 MAX  
DO NOT SCALE PRINT

MATL HT TR — FIN — ✓

DWN APVD APVD REL Top-Link Electronics Ltd.

CHK REL

NAME CUSTOMER DRAWING FOR 6. 4H 1PIN BATTERY

SCALE 1:1 A4 DWG NO. C-200039 SHEET 1 OF 1 REV A

LTR REVISION RECORD APVD DATE