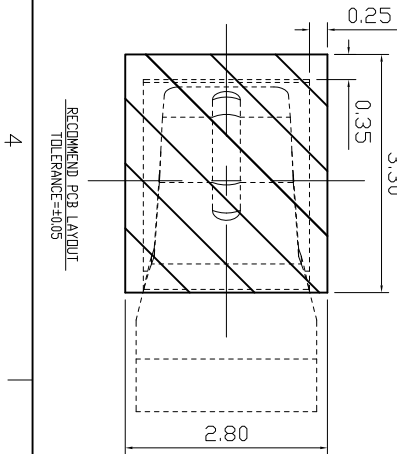
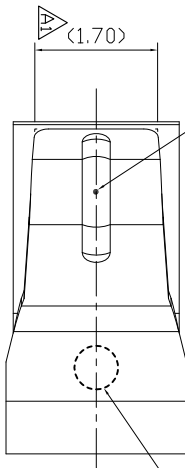
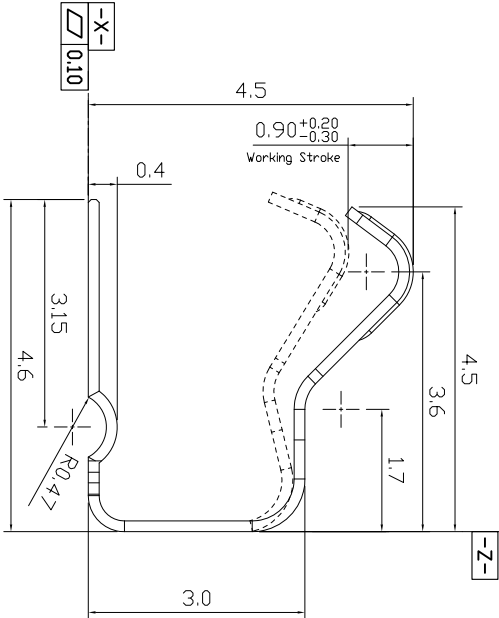
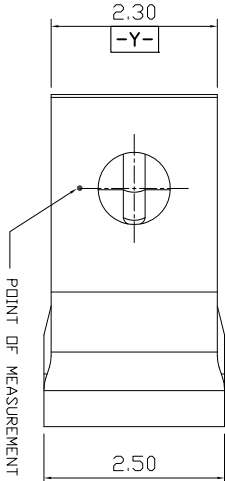


LDC  
-  
DIST  
-

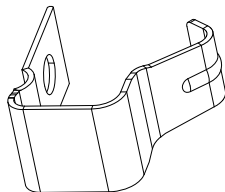
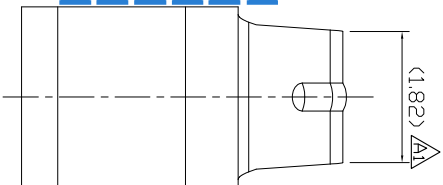


PAD OF PCB.



PICK&PLACE AREA

# Top-link




- NOTES:
1. MATERIAL:  
COPPER ALLOY, THICKNESS=0.15.
  2. PLATING:  
1.25um(50u"min) Ni UNDER PLATING,  
0.025um(1u"min) Au PLATING OVER ALL.

3. SPECIFICATION:  
3.1 ELECTRICAL CHARACTERISTICS:  
CURRENT RATING : 10A.  
VOLTAGE RATING : 50 VAC/DC.  
LOW LEVEL CONTACT RESISTANCE:50mΩ MAX

- 3.2 MECHANICAL CHARACTERISTICS:  
CONTACT NORMAL FORCE: 50gf min PER PIN AT  
WORKING STROKE  
DURABILITY : MATED 10,000 CYCLES AT WORKING STROKE  
WITHOUT DEGRADING

- 3.3 ENVIRONMENTAL CHARACTERISTICS:  
OPERATING TEMPERATURE RANGE : -20°C TO +70°C.  
4. TAPE & REEL PACKAGING PER EIA481 STANDARD.  
5. DIMENSION SHALL BE INTERPRETED PER ASME Y14.5M-2009.  
6. HARMFUL MATERIAL CONTROL FOLLOW "RoHS"

200019-1		2	CARRIER TAPE	P=8mm	WHITE:W=12mm, D/V/REEL=1700 Pcs
ASSEMBLY NUMBER	ITEM	1	4.5H 2.5W ANTENNA CLIPS	1Pcs	NOTES 1,2
PART NAME	QTY	DESCRIPTION			

DIMENSIONS IN MM TOLERANCES UNLESS OTHER SPECIFIED		MATL		HT TR		FIN			
						A			
DVN	APVD	<i>top-link</i> <u>Electronics</u> Top-Link Electronics Ltd.							
0	Calwonlu							Lensing	
0.0	CHK							REL	
0.00	Kent								
ANGLE: 0		NAME							
= ±1.3°									

REMOVE BURRS, BREAK SHARP EDGES R0.10 MAX DO NOT SCALE PRINT		SCALE		DWG		SHEET		REV	
0.0		1:1		A4		NO.		1 OF 1	
				C-200019				A1	

USED ON

-